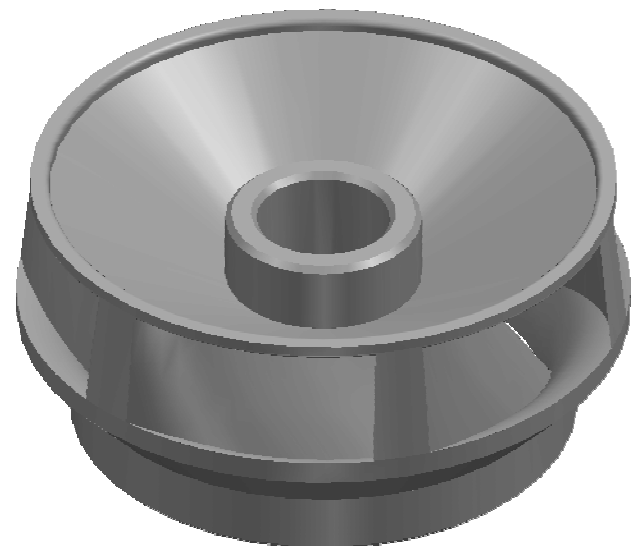


SECTION A-A



**NOTE : ALL DIMENSIONS ARE IN mm.
DO NOT SCALE, IF ANY DOUBT PLEASE ASK.
ALL DIMENSIONS ARE AS CAST**

| | | |
|---------------------|---------------------------------------|----------------------------|
| Material : S.S. 410 | Head Duty Point/shut off : 7/11 Mtrs. | M 302 - 22 IMPELLER |
| Weight : 0.500 kg | Power : 2.00 H.P. | |
| Borewell : 6" | Flow : 800 L.P.M. | MIX FLOW - AS CAST |
| Scale : N.T.S. | Nos. of Blades : 6 ACW | INVESTMENT CASTING |
| Date : 15.05.2012 | Motor R.P.M. : 2880 @ 50 Hz | |