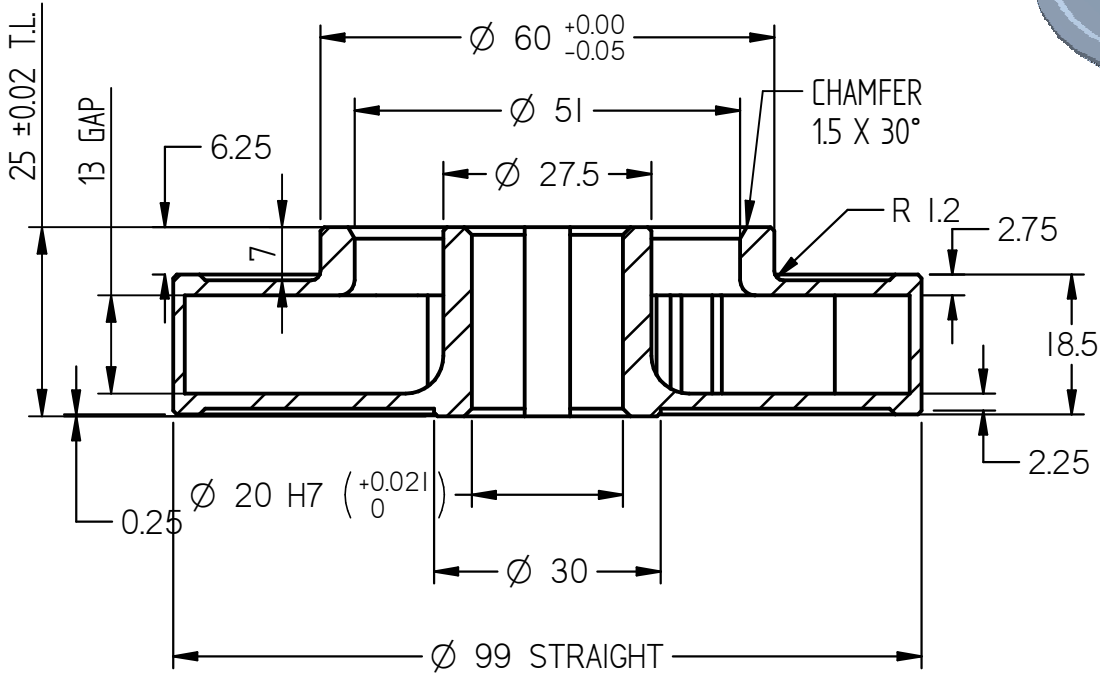
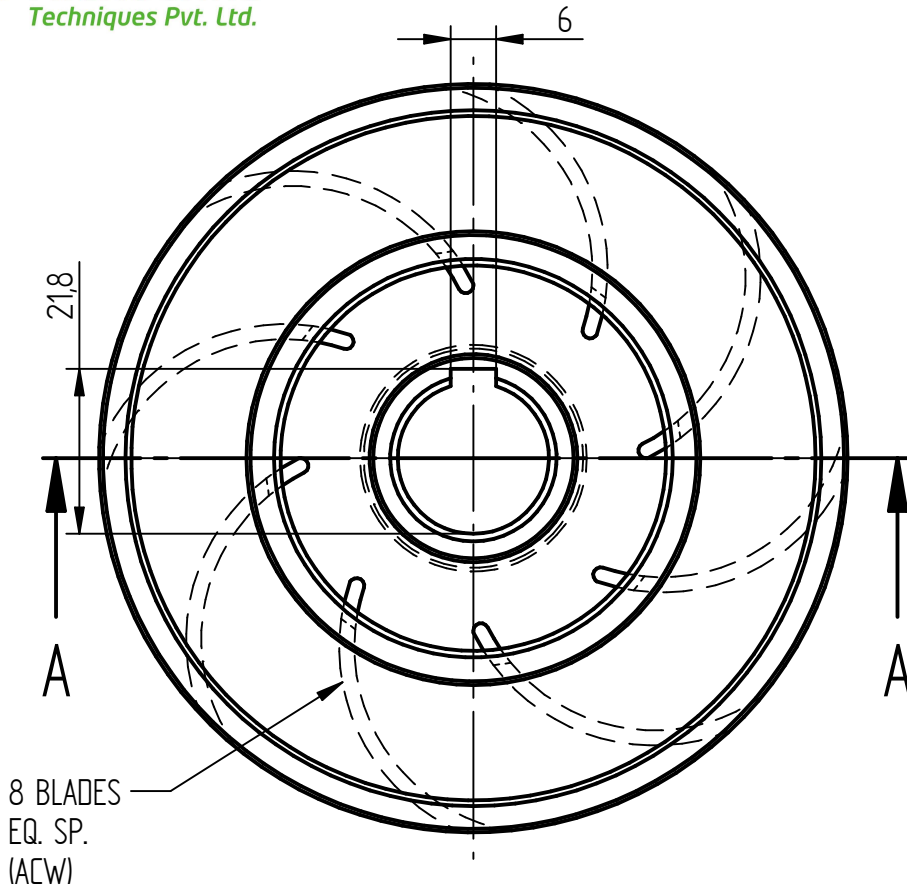
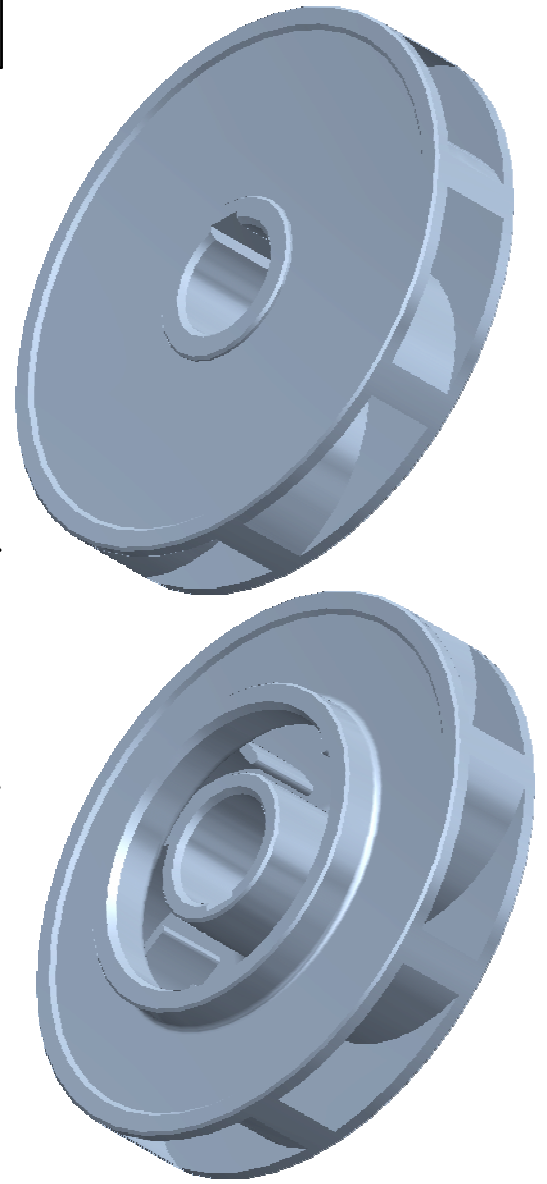


**SECTION A-A**

**NOTE : ALL DIMENSIONS ARE IN mm.  
DO NOT SCALE, IF ANY DOUBT PLEASE ASK.  
ALL DIMENSIONS ARE AS CAST**

Material : S.S. 410	Head : Duty Point / Shut Off : 8 / 12 Mtrs.	<b>MS 100 RF IMPELLER</b>
Weight : 0.485 kg	Power : 0.30 H.P. / 0.22 K.W.	
Borewell : 6"	Flow : 1.67 M3 / Hr , 100 L.P.M.	<b>FULL CNC - TAPER GAP 7 mm</b>
Scale : N.T.S.	Nos. of Blades : 8 ACW	
Date : 23 . 01 . 2012	Motor R.P.M. : 2880	<b>Shell Mould</b>

**KEY WAY  
6 X 1.8**



**SECTION A-A**

**NOTE : ALL DIMENSIONS ARE IN mm.  
DO NOT SCALE, IF ANY DOUBT PLEASE ASK.  
ALL DIMENSIONS ARE MACHININED**

Material : S.S. 410	Head : Duty Point / Shut Off : 8 / 12 Mtrs.	<b>MS 100 RF IMPELLER</b>
Weight : 0.450 kg.	Power : 1 H.P. / 0.75 K.W.	
Borewell : 6"	Flow : 19.2 M3 / Hr, 320 L.P.M.	<b>GAP 13 MM</b>
Scale : N.T.S.	Nos. of Blades : 8 ACW	<b>Shell Mould</b>
Date : 10 . 01 . 2012	Motor R.P.M. : 2880	