

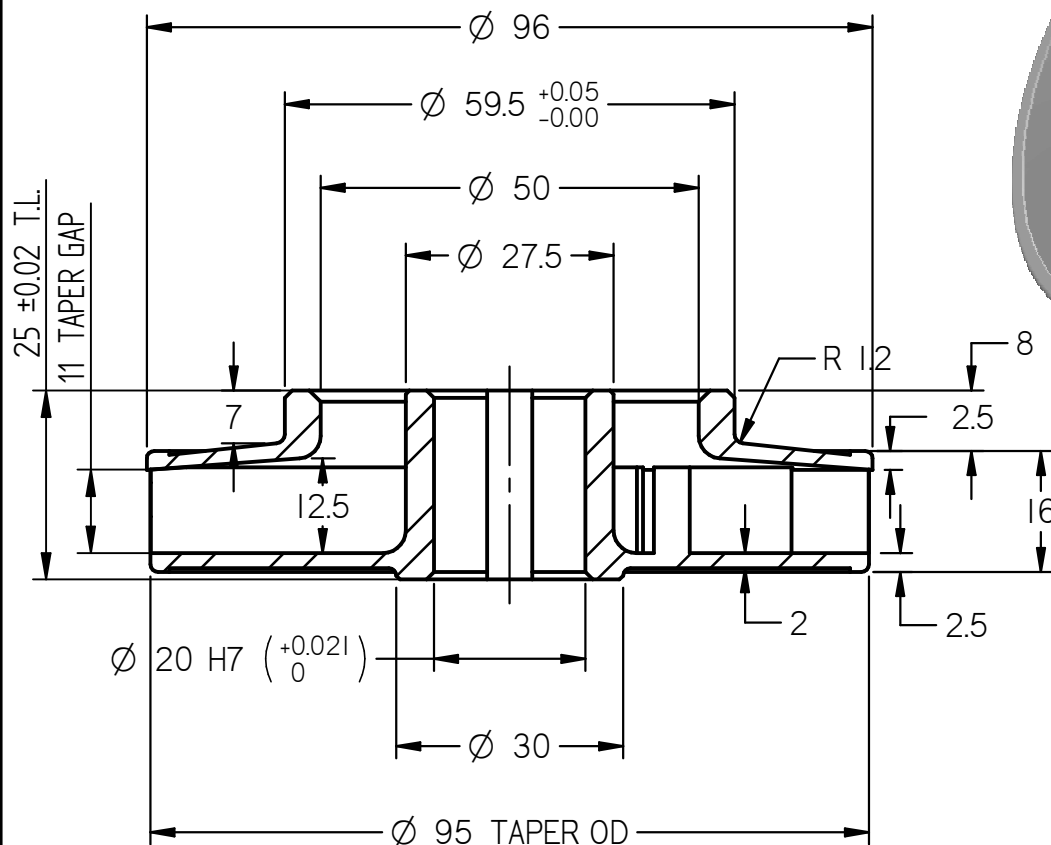
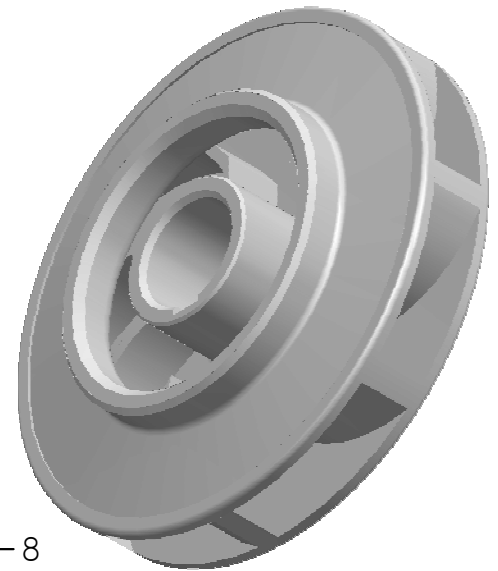
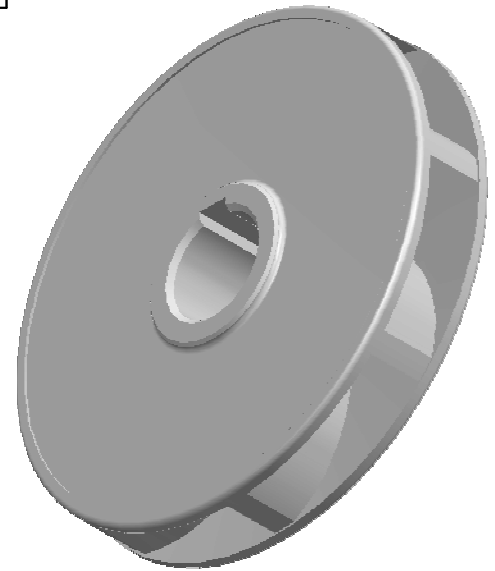
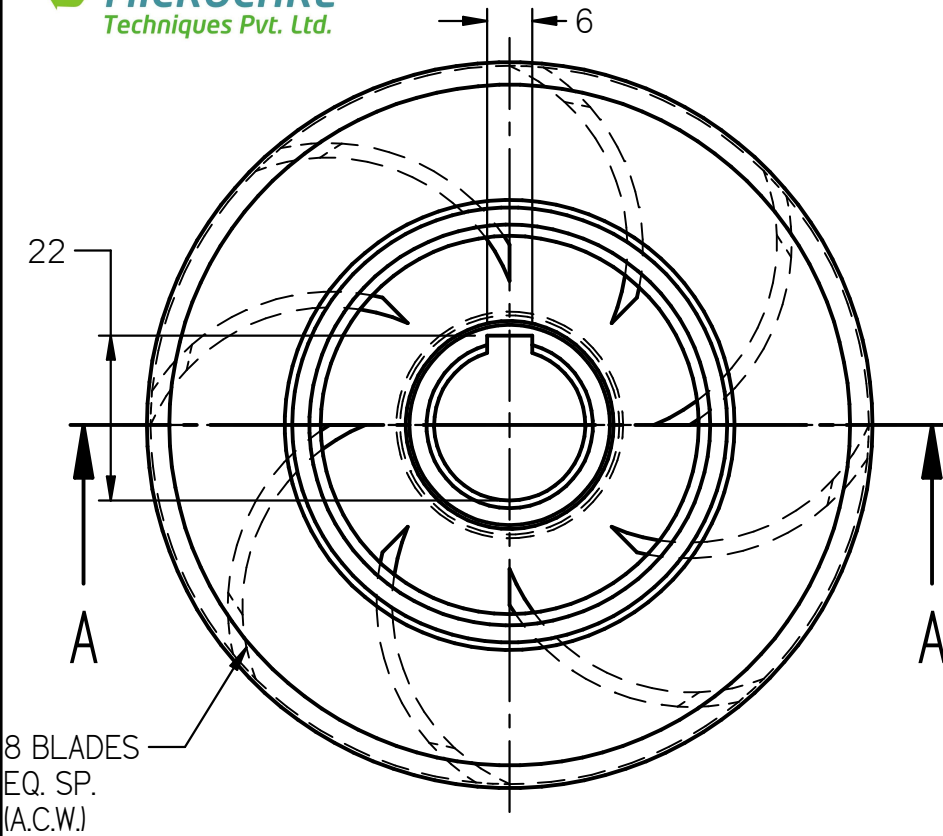
SECTION A-A

**NOTE : ALL DIMENSIONS ARE IN mm.  
DO NOT SCALE, IF ANY DOUBT PLEASE ASK.  
ALL DIMENSIONS ARE AS CAST**

Material : S.S. 410	Head : Duty Point / Shut Off : 8 / 12 Mtrs.	<b>MS 80 RF IMPELLER</b>
Weight : 0.480 kg	Power : 0.8 H.P. / 0.6 K.W.	
Borewell : 6"	Flow : 16.8 M3 / Hr , 280 L.P.M.	<b>TAPER GAP 12.5 TO 11 mm</b>
Scale : N.T.S.	Nos. of Blades : 8 ACW	<b>Shell Mould</b>
Date : 23 . 01 . 2012	Motor R.P.M. : 2880	

**KEY WAY**  
**6 X 2.0**

**DRG NO. : MS-157-M**



**SECTION A-A**

**NOTE : ALL DIMENSIONS ARE IN mm.**  
**DO NOT SCALE, IF ANY DOUBT PLEASE ASK.**  
**ALL DIMENSIONS ARE AS MACHINING**

Material : S.S. 410	Head : Duty Point / Shut Off : 8 / 12 Mtrs.	<b>MS 80 RF IMPELLER</b>
Weight : 0.340 kg	Power : 0.8 H.P. / 0.6 K.W.	
Borewell : 6"	Flow : 16.8 M3 / Hr , 280 L.P.M.	<b>TAPER GAP 12.5 TO 11 mm</b>
Scale : N.T.S.	Nos. of Blades : 8 ACW	
Date : 23 . 01 . 2012	Motor R.P.M. : 2880	<b>Shell Mould</b>