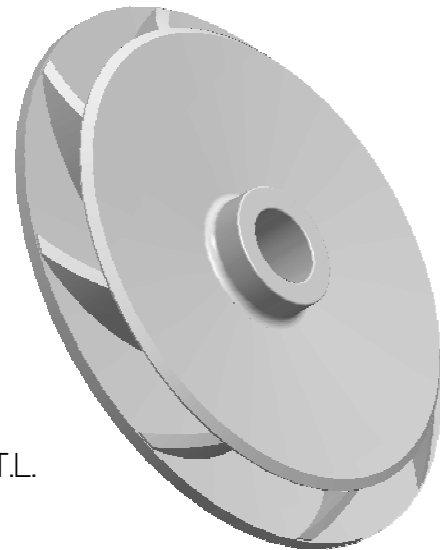
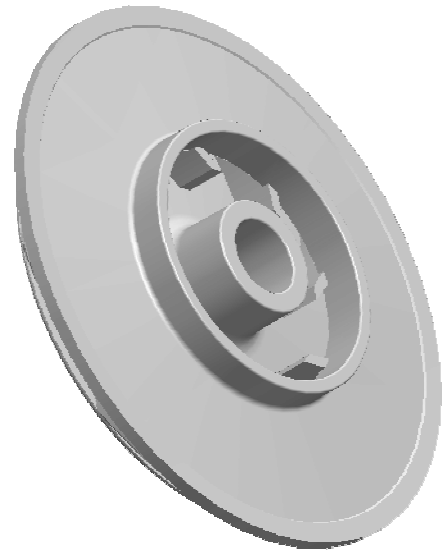
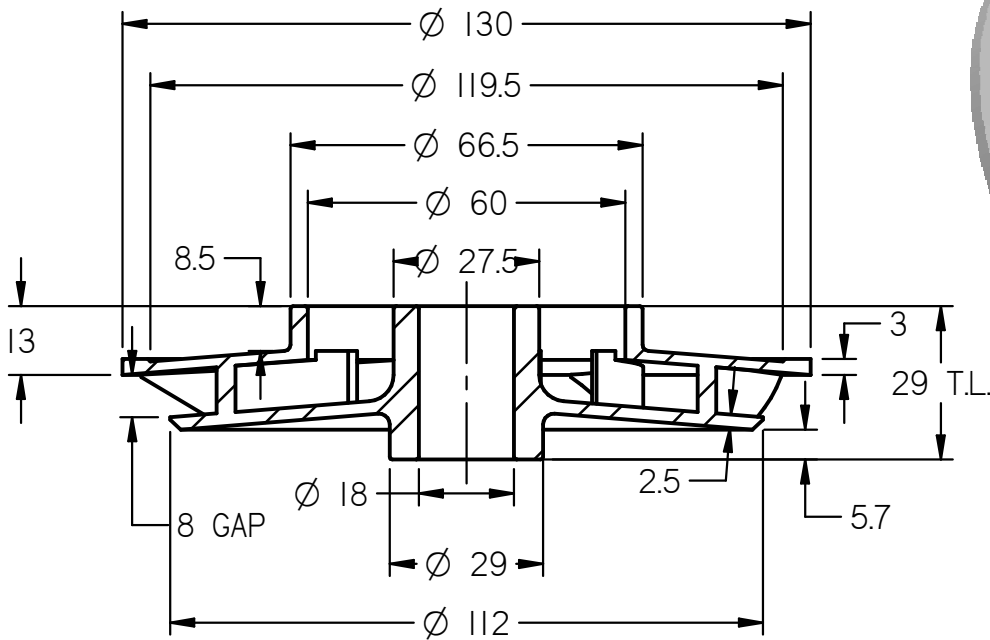


8 BLADES  
EQ. SP.



**SECTION A-A**

**NOTE : ALL DIMENSIONS ARE IN mm.  
DO NOT SCALE, IF ANY DOUBT PLEASE ASK.  
ALL DIMENSIONS ARE AS CAST**

Material : S.S. 410 / 304	Head : Duty Point / Shut Off : 12 / 15 Mtrs.	<b>M 125 - IMPELLER HH</b>
Weight : 0.575 kg	Power : 1.25 H.P. / 0.93 K.W.	
Borewell : 6"	Flow : 16.5 M3 / Hr , 275 L.P.M.	<b>HIGH HEAD 50 FEET</b>
Scale : N.T.S.	Nos. of Blades : 8 A.C.W.	<b>GAP 8 mm</b>
Date : 18 . 01 . 2012	Motor R.P.M. : 2880	<b>INVESTMENT CASTING</b>