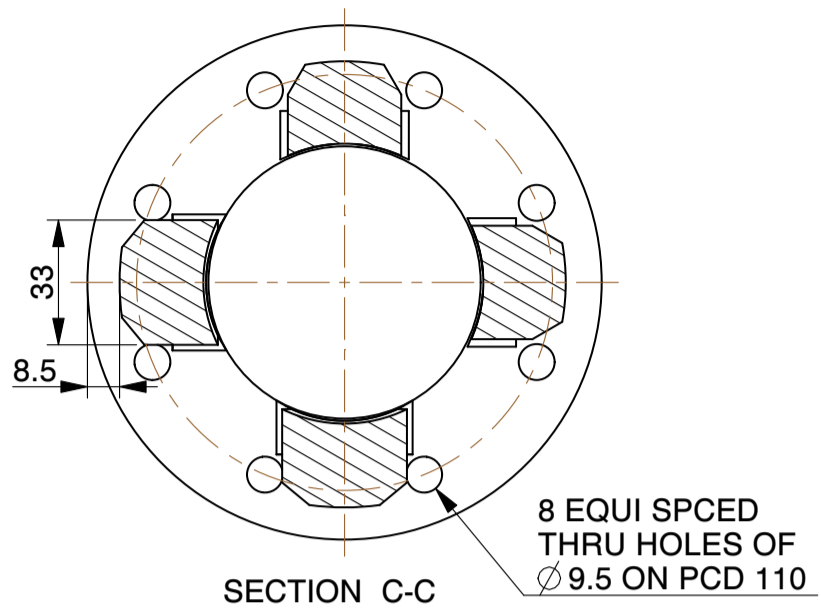
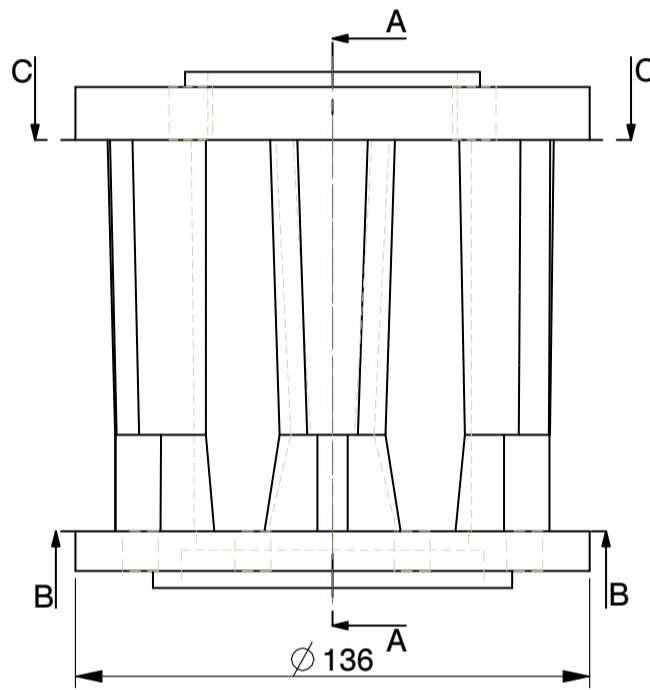


SECTION A-A



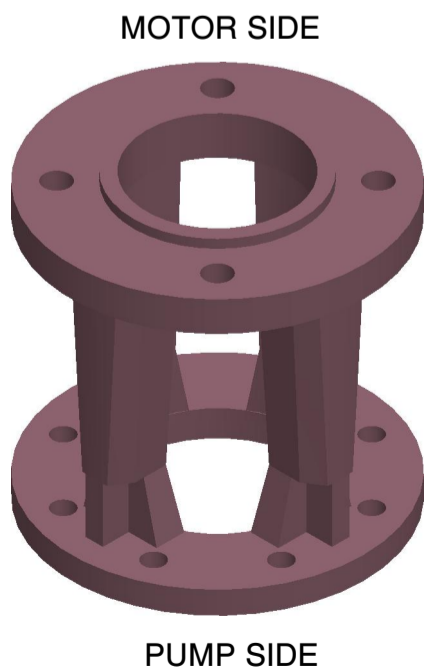
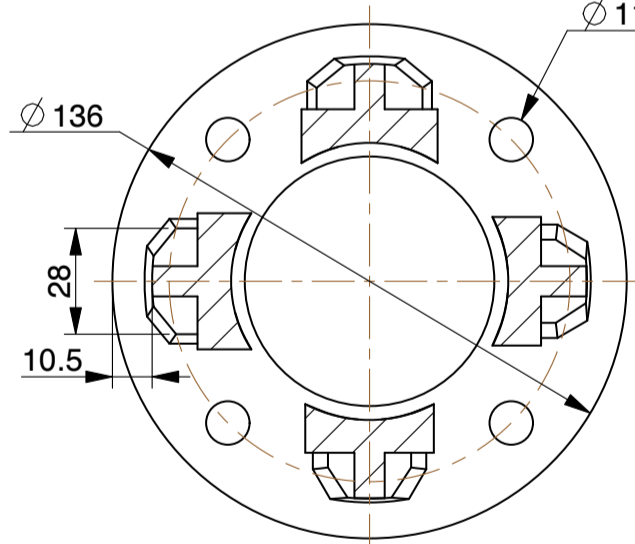
SECTION C-C

8 EQUI SPCED THRU HOLES OF  $\phi$  9.5 ON PCD 110



SECTION B-B

4 EQUI SPCED THRU HOLES OF  $\phi$  11.5 ON PCD 106



NOTE:-

- 1).ALL DIMENSIONS ARE IN mm.
- 2).DO NOT SCALE,IF ANY DOUBT PLEASE ASK.
- 3).ALL DIMENSIONS ARE AS MACHINED.

WEIGHT (AS CAST) :- 4.6 Kg.

<b>MICROCARE TECHNIQUES P. LTD.</b>		
<i>Survey No.11,Nr. Kalpataru Society, Village : Zundal.</i>		
<i>Dist. :Gandhinagar-382421, Gujarat, INDIA. email: microcare25@microcaregroup.com</i>		
<b>PART NAME:</b>		<b>SCALE</b>
IP 262		1:2
<b>MATERIAL:</b>	<b>DESCRIPTION:</b>	<b>DATE</b>
CAST IRON	-	17-05-2011