

4 3 2 1

H H

G G

F F

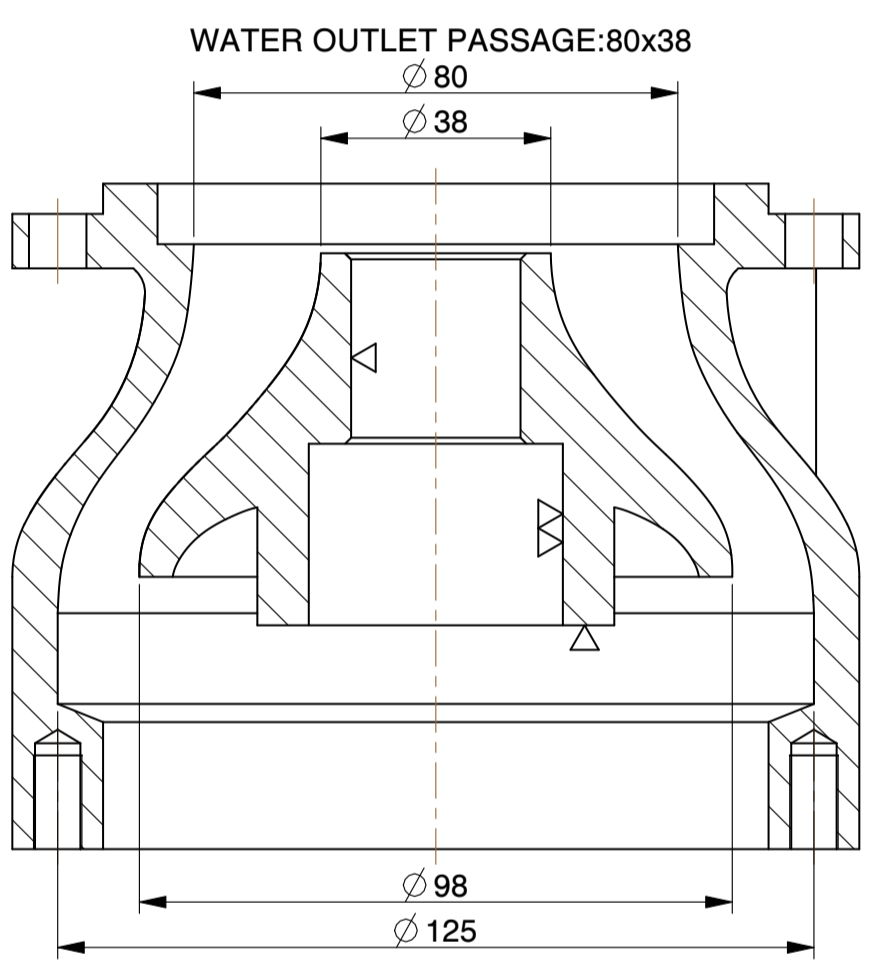
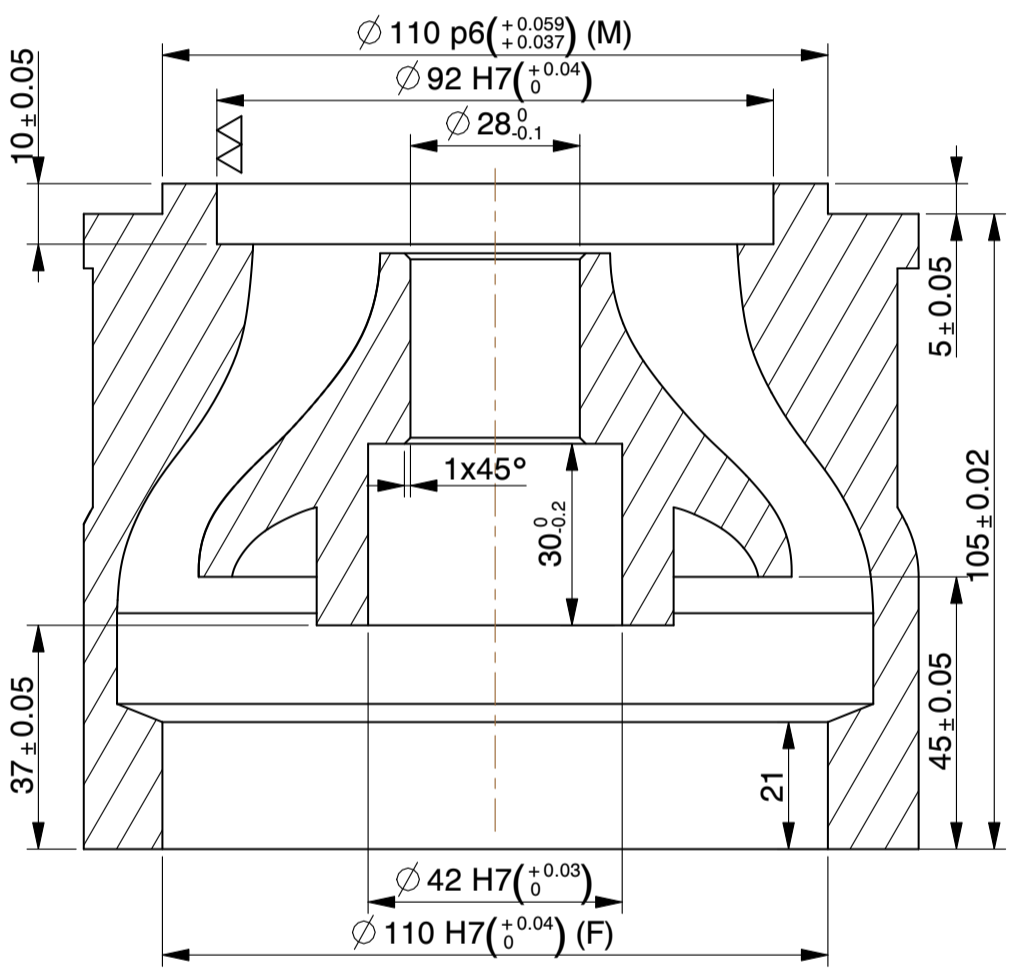
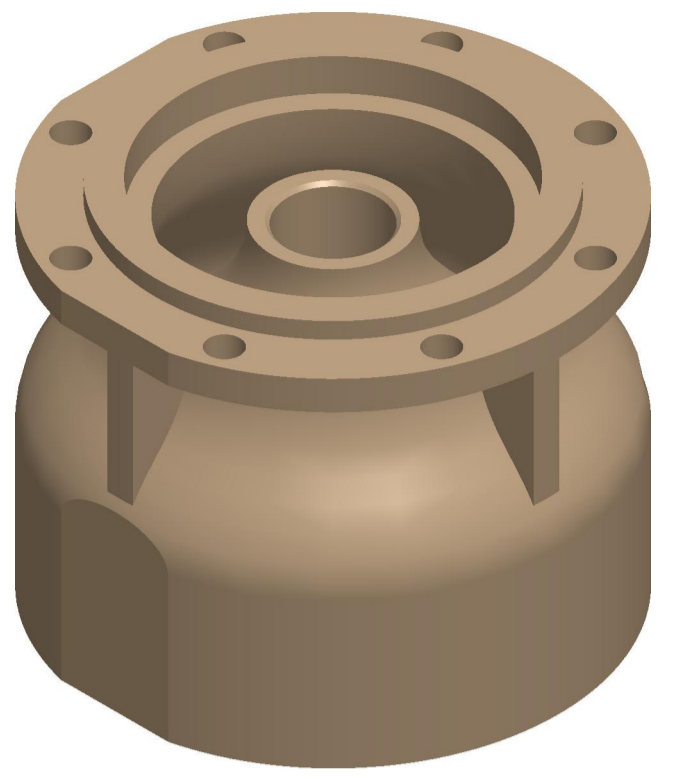
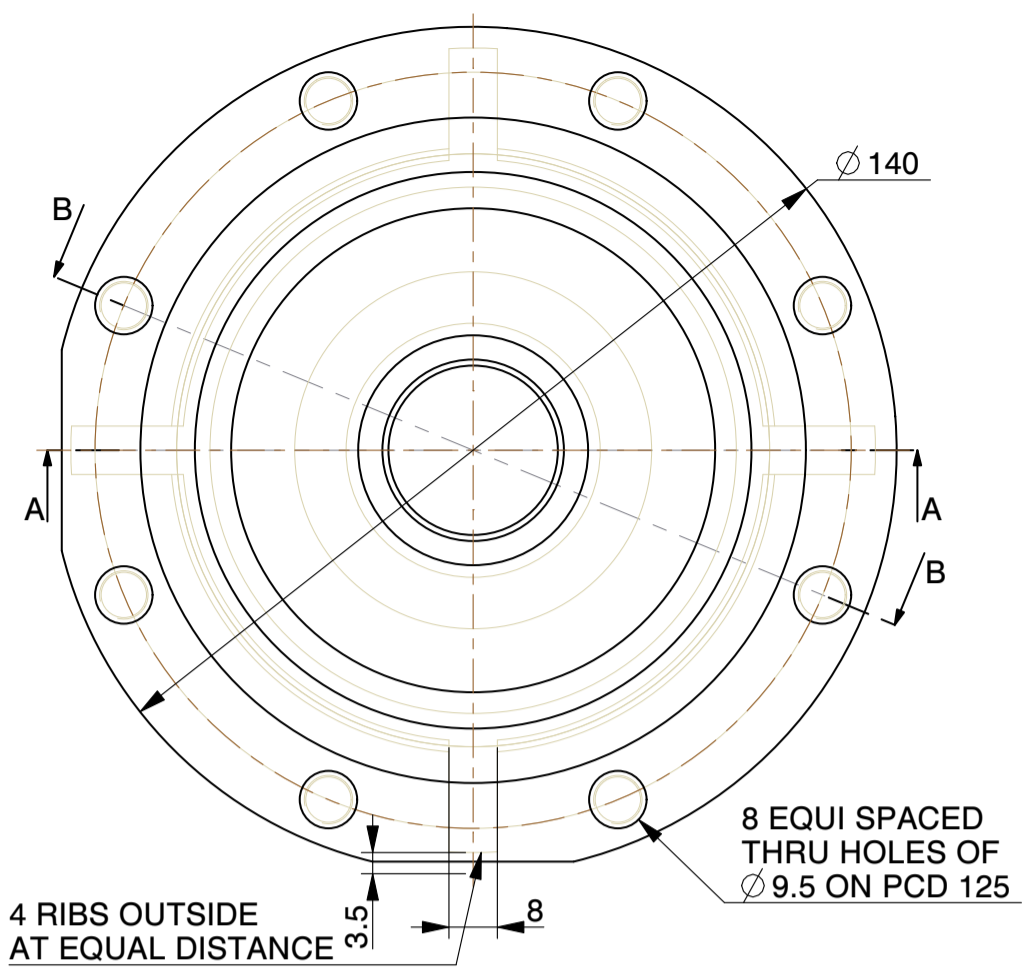
E E

D D

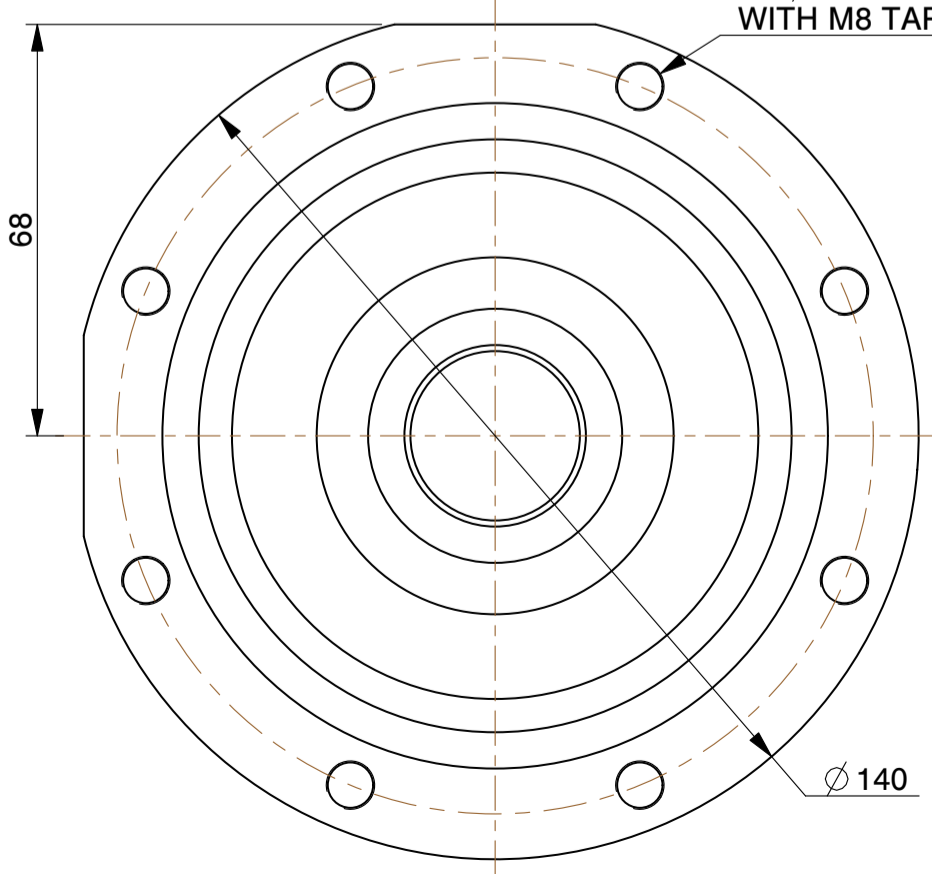
C C

B B

A A



8 EQUI SPACED BLIND HOLES OF $\phi 6.8$ * DEEP 17.5 WITH M8 TAPPING ON PCD 125



VERTICAL GAP FOR IMPELLER MOVEMENT BETWEEN TWO BOWLS ASSEMBLY	
WATER INLET PASSAGE:	125 x 98
WATER OUTLET PASSAGE:	80 x 38
WEIGHT (AS CAST)	5.5 Kg.

NOTE:-
 1).ALL DIMENSIONS ARE IN mm.
 2).DO NOT SCALE,IF ANY DOUBT PLEASE ASK.
 3).ALL DIMENSIONS ARE AS MACHINED.

MICROCARE TECHNIQUES P. LTD.
 Survey No.11,Nr. Kalpataru Society, Village : Zundal.
 Dist. :Gandhinagar-382421, Gujarat, INDIA. email: microcare25@microcaregroup.com

PART NAME:	BOWL - 323 / 110	SCALE	1:1.25
MATERIAL:	CAST IRON	DATE	17-05-2011