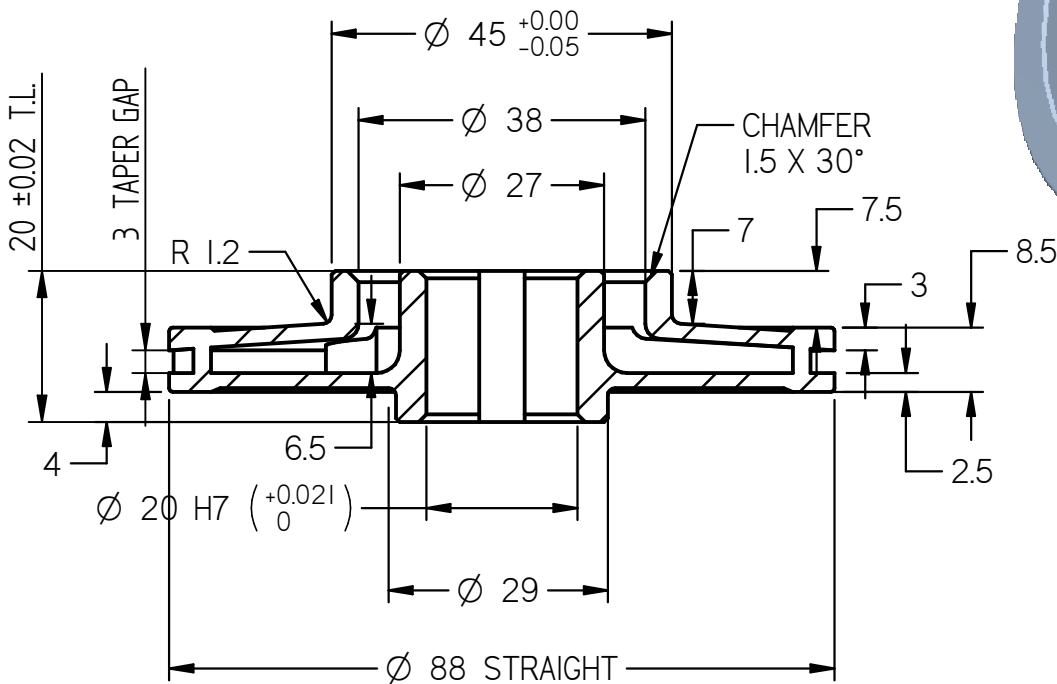
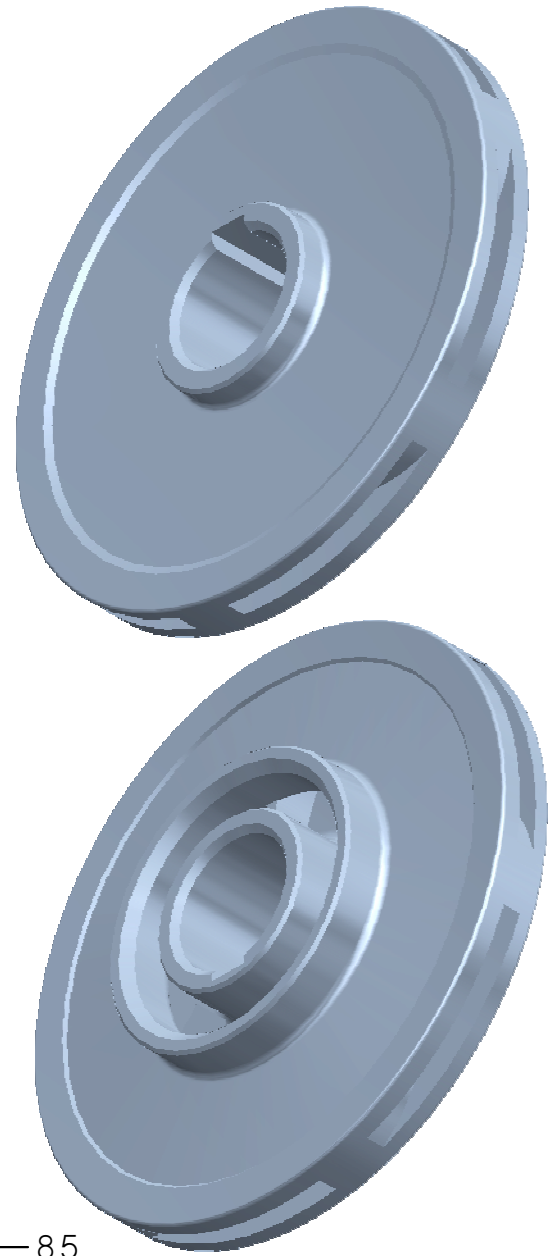
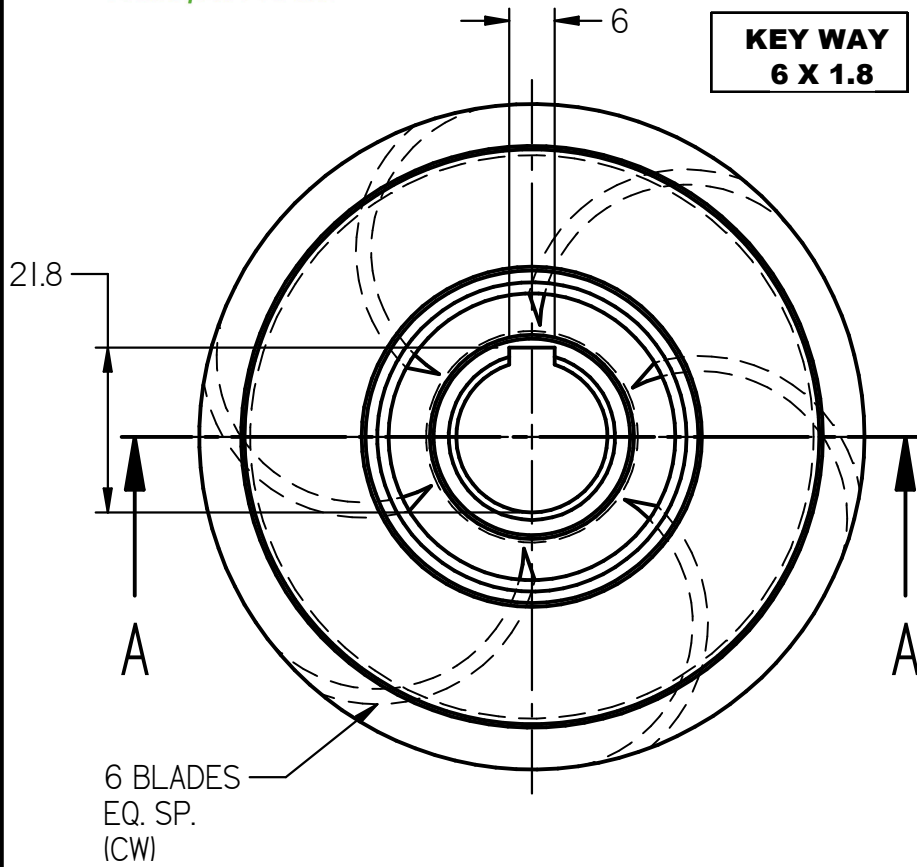


**SECTION A-A**

**NOTE : ALL DIMENSIONS ARE IN mm.  
DO NOT SCALE, IF ANY DOUBT PLEASE ASK.  
ALL DIMENSIONS ARE AS CAST**

Material : S.S. 410	Head : Duty Point / Shut Off : 6 / 9 Mtrs.	<b>MS 20 RF IMPELLER</b>
Weight : 350 Gms.	Power : 0.2 H.P. / 0.15 K.W.	
Borewell : 6"	Flow : 4.5 M3 / Hr , 75 L.P.M.	<b>TAPER GAP 4.5 TO 3 mm</b>
Scale : N.T.S.	Nos. of Blades : 6 CW	
Date : 10 . 01 . 2012	Motor R.P.M. : 2880	<b>Shell Mould</b>



**SECTION A-A**

**NOTE : ALL DIMENSIONS ARE IN mm.  
DO NOT SCALE, IF ANY DOUBT PLEASE ASK.  
ALL DIMENSIONS ARE MACHININED**

Material : S.S. 410	Head : Duty Point / Shut Off : 6 / 9 Mtrs.	<b>MS 20 RF IMPELLER</b>
Weight : 0.300 kg	Power : 0.2 H.P. / 0.15 K.W.	
Borewell : 6"	Flow : 4.5 M3 / Hr , 75 L.P.M.	<b>TAPER GAP 6.5 TO 3 mm</b>
Scale : N.T.S.	Nos. of Blades : 6 CW	
Date : 10 . 01 . 2012	Motor R.P.M. : 2880	<b>Shell Mould</b>