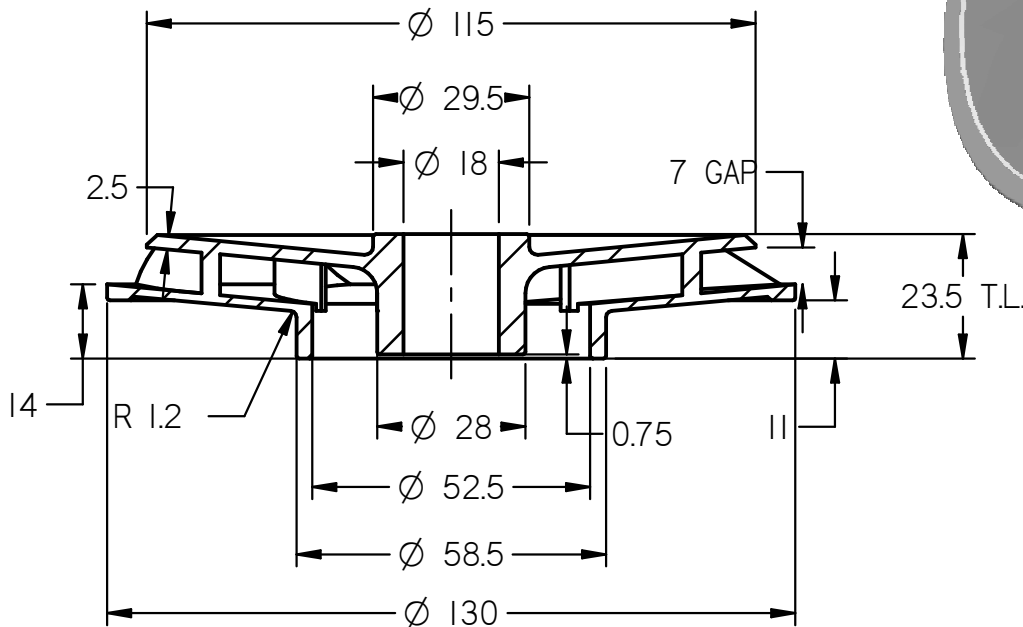


8 BLADES
EQ. SP.
(A.C.W.)



SECTION A-A

Note : Casting Drawing

Material : S.S. 410 / 304	Head : Duty Point / Shut Off : 12 / 15 Mtrs.	M 100 - IMPELLER HH
Weight : 0.575 kg	Power : 1.0 H.P. / 0.75 K.W.	
Borewell : 6"	Flow : 13.2 M3 / Hr , 220 L.P.M.	HIGH HEAD 50 FEET
Scale : N.T.S.	Nos. of Blades : 8 A.C.W.	GAP 7 mm
Date : 18 . 01 . 2012	Motor R.P.M. : 2880	INVESTMENT CASTING