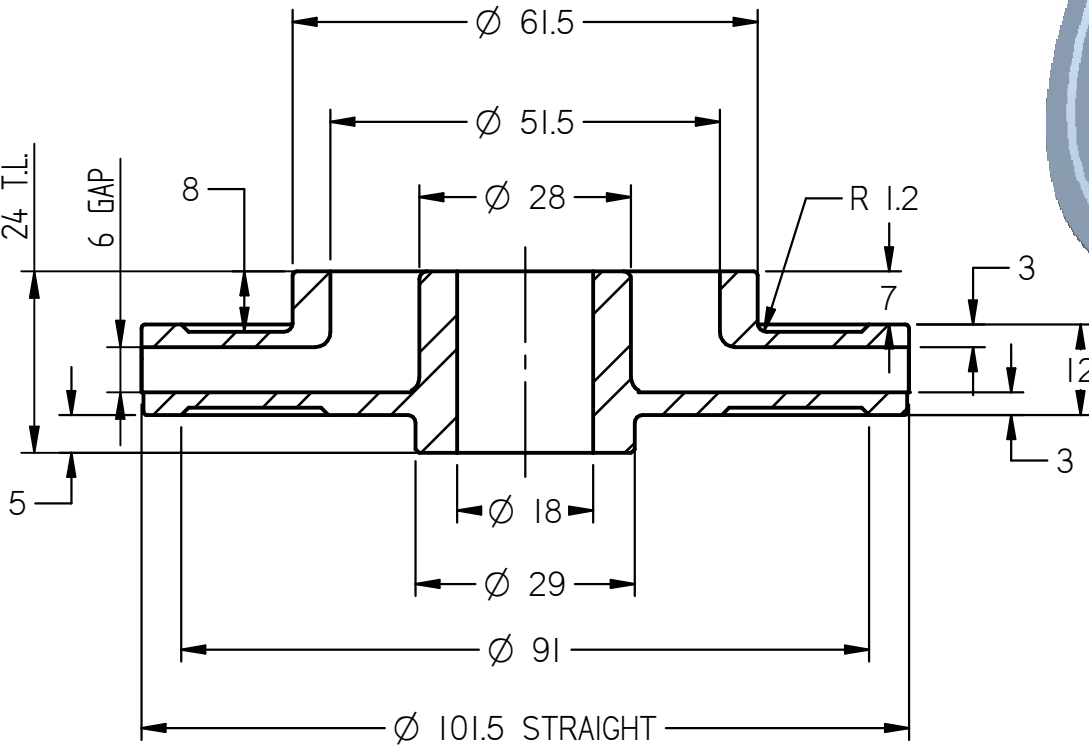
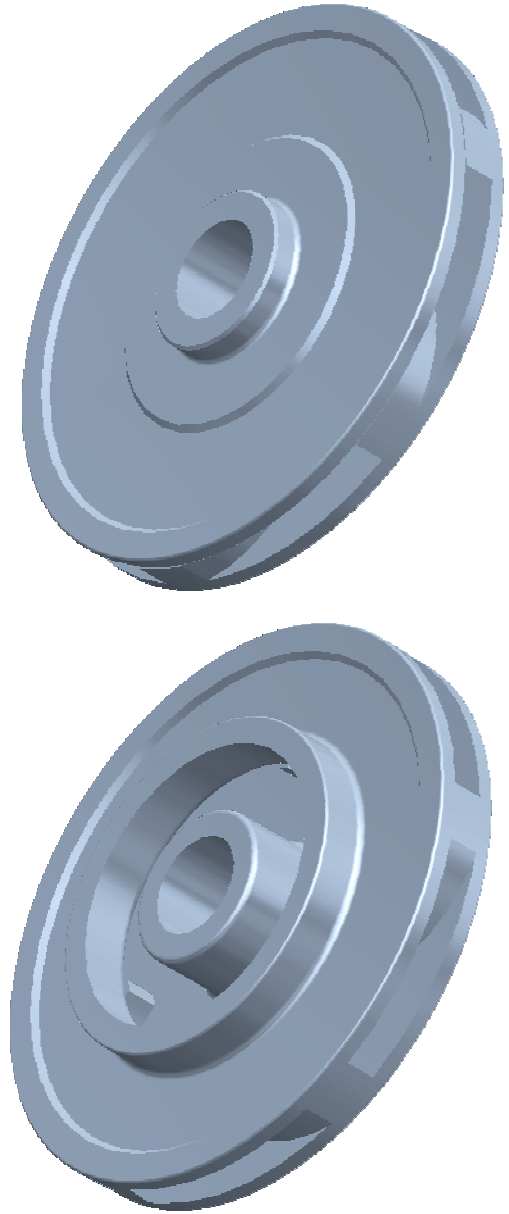


6 BLADES  
EQ. SP.  
(A.C.W.)



SECTION A-A

**NOTE : ALL DIMENSIONS ARE IN mm.  
DO NOT SCALE, IF ANY DOUBT PLEASE ASK.  
ALL DIMENSIONS ARE AS CAST**

Material : S.S. 410	Head : Duty Point / Shut Off : 8 / 12 Mtrs.	<b>M 40 RF IMPELLER</b>
Weight : 0.400 kg	Power : 0.4 H.P. / 0.3 K.W.	
Borewell : 6"	Flow : 12 M3 / Hr , 200 L.P.M.	<b>GAP 6 mm</b>
Scale : N.T.S.	Nos. of Blades : 6 ACW	
Date : 10 . 01 . 2012	Motor R.P.M. : 2880	<b>INV. CASTING</b>