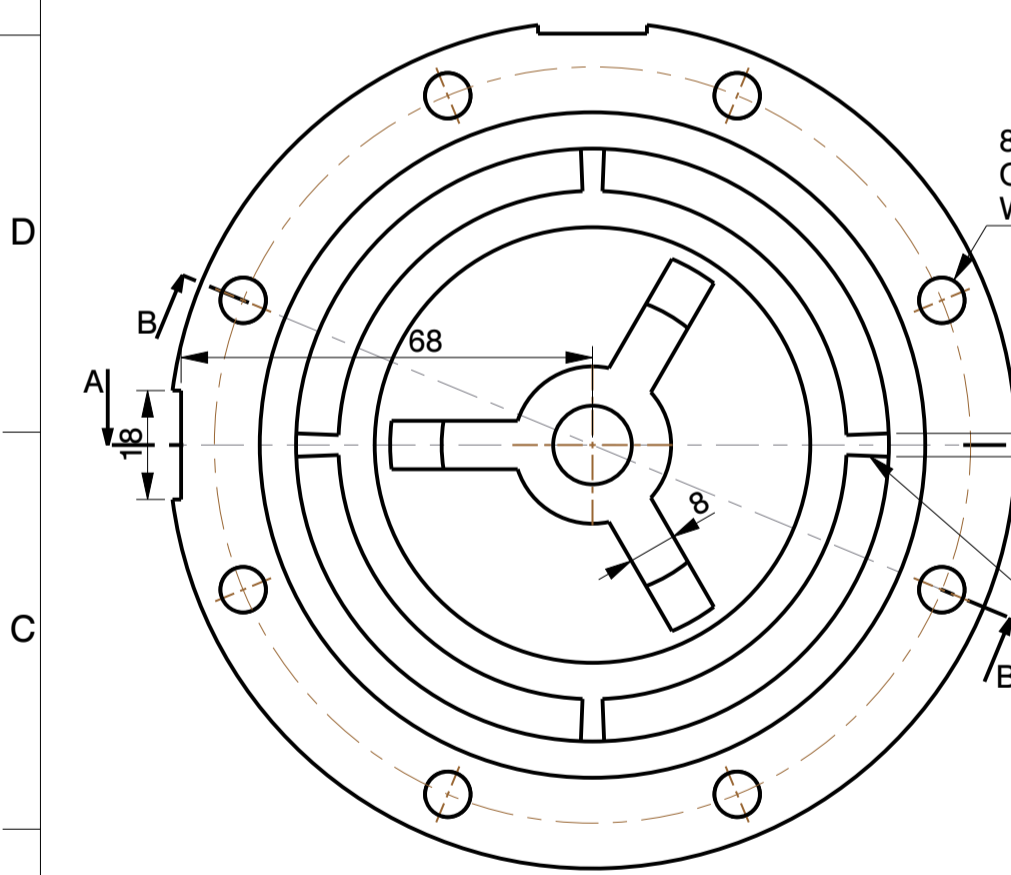
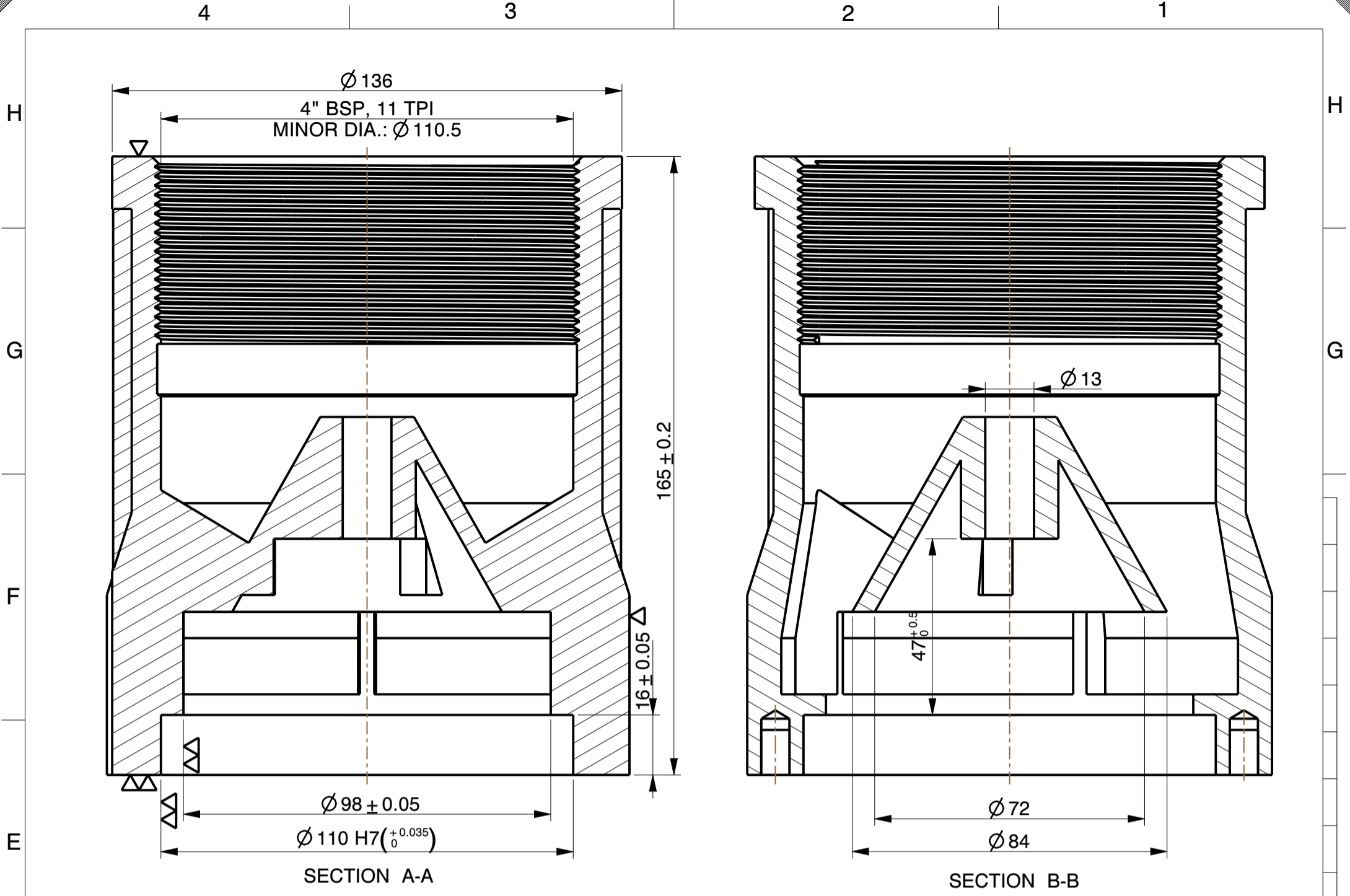
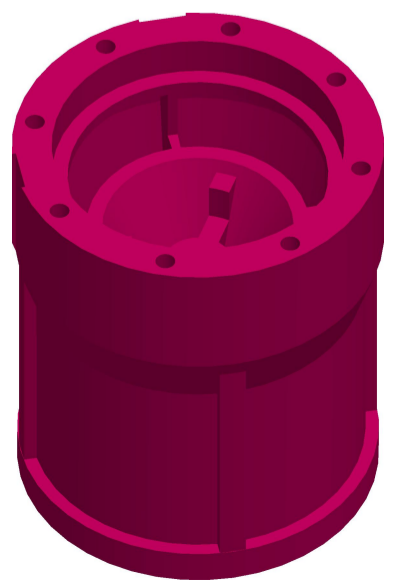
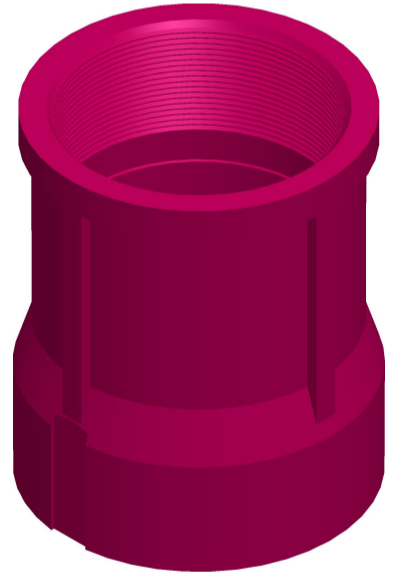


M8x.5 ISO - H TAP  $\nabla$  12.000  
7.5 DRILL ( 7.500 )  $\nabla$  15.000 -( 8 ) HOLE



8 EQUI SPACED BLIND HOLES  
OF  $\phi 8.5$  \* DEEP 15  
WITH TAPPING OF M8 ON PCD 125

4 RIBS INSIDE  
AT EQUAL DISTANCE



NOTE:-  
1). ALL DIMENSIONS ARE IN mm.  
2). DO NOT SCALE, IF ANY DOUBT PLEASE ASK.  
3). ALL DIMENSIONS ARE AS CAST. (Machined in bracket)

<b>MICROCARE TECHNIQUES P. LTD.</b>		
Survey No.11, Nr. Kalpataru Society, Village : Zundal. Dist. :Gandhinagar-382421, Gujarat, INDIA. email: microcare25@microcaregroup.com		
<b>PART NAME:</b>	NRV 323-110 WITH CONE 4" THREAD 5 LUGS	SCALE 1:1.25
<b>MATERIAL:</b>	CAST IRON	DATE 5-1-2012
<b>DESCRIPTION:</b>	Weight:- 4.8 Kgs	