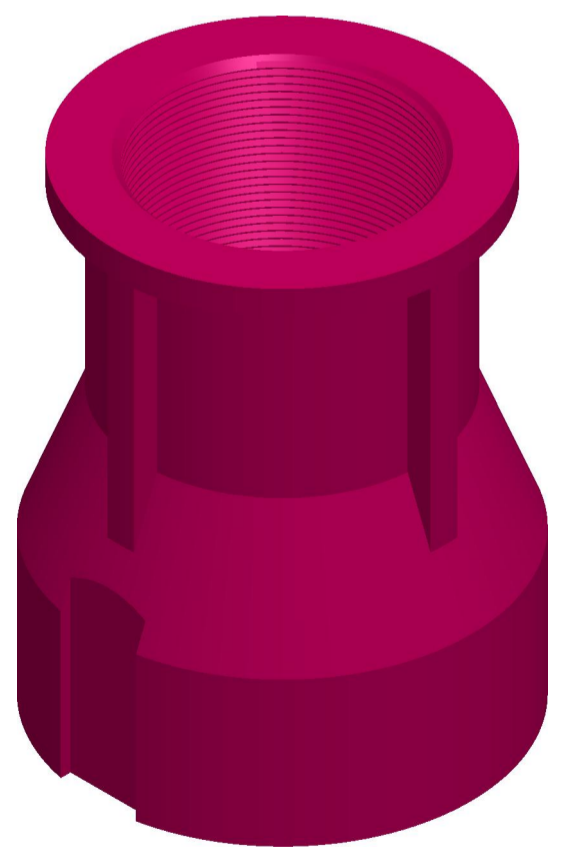


8 EQUI SPACED BLIND HOLES OF $\phi 6.8$ * DEEP 18 WITH TAPPING OF M8 ON PCD 121



WEIGHT (AS CAST) :- 5.6 Kg.

NOTE:-
 1).ALL DIMENSIONS ARE IN mm.
 2).DO NOT SCALE,IF ANY DOUBT PLEASE ASK.
 3).ALL DIMENSIONS ARE AS MACHINED.

MICROCARE TECHNIQUES P. LTD.		
Survey No.11,Nr. Kalpataru Society, Village : Zundal. Dist. :Gandhinagar-382421, Gujarat, INDIA. email: microcare25@microcaregroup.com		
PART NAME:	NRV - 323 / 107 - 3"	SCALE 1:1.25
MATERIAL: CAST IRON	DESCRIPTION: 3" BSP THREADS WITH 11 TPI	DATE 17-05-2011